



ScotWeave **Drape** is a three-dimensional visualisation tool that allows you to see ScotWeave fabrics realistically draped on garments and other real-life objects. The fabrics follow the contours of the 3D objects and retain the shading of the base image. ScotWeave Drape is ideal for showing customers how a fabric will appear in real-life - draped onto a jacket worn by a model or draped onto curtains or a sofa in realistic room settings.

Images & Grids

Base images (onto which fabrics are draped) can be scanned directly or imported using standard image file formats (e.g. TIFF, BMP, PCX, JPeG etc.). A draping contour grid must be superimposed upon a base image before it can be used for draping. This is done visually using simple point and drag operations. There is an absolute minimum of numerical information required to setup a drape grid, which makes the process quick and easy to understand.

Regions

Drape regions are separate parts of a drape image into which you can apply different drape fabrics or apply different alignments or lighting effects. For example, on an image of a jacket you might identify the sleeves and lapels as different drape regions to the main body of the jacket. Regions may also be setup as solid colour areas (whose colour you can vary as required) or as feature regions, which are never changed by the drape process (e.g. buttons).

Fabric Images

Drape fabric images can be scanned directly, imported from ScotWeave **Dobby Designer** or **Jacquard Designer** files, or can be imported as standard image files (e.g. TIFF, BMP, PCX, JPeG etc.). Drape fabrics are added to a "drape library" from which they can be selected visually as they are required. Fabrics can be aligned differently in drape regions by simply dragging them within the region. The image is re-draped in real-time as you drag the fabric. You can also scale the fabrics differently in different regions. Lighting effects can be applied to each drape region as required.



Scaling

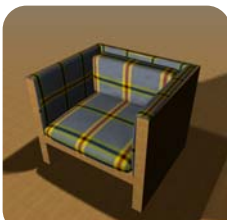
Simple real life sizes can be applied to the base image and fabrics so that the scale of the resulting draped image is correctly maintained. The final draped image can also be "softened" to increase the realism of the image and remove the contrast, which can be found in some drape simulations.

Once finished the drape project is saved in a native file format, which allows it to be opened and changed, if required, at any time. You can also export the drape image in any one of the standard image file formats, which allows the finished image to be viewed on virtually any computer system.

Presentation

An ideal compliment to ScotWeave Drape is the separate ScotWeave **Presentation Program** for storyboard layouts. This program allows you to create "storyboard" layouts from any ScotWeave image element (e.g. dobbie, jacquard design, draped image), to position these as required, and to add text and background effects to create effective presentations on screen and on a colour printout.

Special Features



- ★ Create your own **room sets/drape models** from scanned or drawn images
- ★ Easy **visual creation** of draping grids superimposed on base image
- ★ Create **different draping regions** for different parts of the image
- ★ Drape **different fabric images** onto the one image
- ★ **Visual fabric alignment** (drag fabric) in real time
- ★ **Adjust lighting and scale** on each drape regions to fine tune the final image
- ★ Simple **drag and drop interface** for applying fabrics to drape regions
- ★ Drape with ScotWeave **Dobby and Jacquard designs** or any standard image file format
- ★ Final drape project can be **compressed for e-mail**
- ★ Output finished drape image in **standard image file format**





The ScotWeave **Presentation Program** is a storyboard layout tool that allows you to combine images and text together to create fast, professional layouts. You can combine ScotWeave fabrics, ScotWeave draped images, standard image files, colours, and text on any paper size, making the presentation of ideas to customers simple, easy and quick.

Library

A collection of ScotWeave Dobby and Jacquard fabrics, ScotWeave Draped images, yarn palettes and any other images, which can include company logos and trademarks, are collated into a "library" area ready for placing into the presentation when required.

Page Layout

Page layout is based upon standard paper sizes (e.g. A4, Letter, Legal, A3, B Series, A2, or larger if you have a printer capable) in Portrait or Landscape format. Objects are placed onto the page by drawing simple boxes on the screen and then selecting a file or other object type to fill the box. Objects can overlap, cascade or stand alone, and can be filled with any item from the library. Alternatively, you can fill an object with a colour or text, using standard Windows fonts in any font size or colour.

Finishing Touches

You can work with transparency to achieve irregular shaped outlines on images. It is easy to resize any of the objects and a simple "move" function is provided to aid positioning. Guidelines assist placement and help with alignment of objects individually or collectively, visually or by auto alignment, providing fast accurate positioning in the storyboard. Also provided is an **Auto Layout** function for simple non-overlapping images - choose the number of boxes required, the height and width, and the rest is done for you.



Storage & Printing

Fabrics can have straight or pinked/gimped edges and shadows of varying depth can be applied to all images to add realism to the appearance of a page. There is full access to the ScotWeave fabric finishing options. The titles of fabrics and images can automatically be displayed for easy referencing back to the relevant ScotWeave file. A border of any depth and colour can be applied to frame your overall presentation.

The final Presentation can be saved using a space saving filing method. The Presentation Page can also be saved in a standard image file format (e.g. TIFF, JPG etc.), which can be used for inclusion into other promotional material. The page layout can be printed out quickly to your chosen printer, on the desired paper size and direction. Once a layout page has been saved, it can be used as a template for a new presentation simply by replacing the fabrics or images as required, providing time saving shortcuts.

Special Features

- ★ **Library** of fabrics/images/drapes/logos/yarns
- ★ Apply **text and borders** in varying sizes and colours
- ★ Easy **alignment and resizing** of objects
- ★ Dynamic **Auto Drape** function available
- ★ **Auto Layout** option available
- ★ Final Presentation can be saved in a **standard image file format**



How to contact ScotCad Textiles Ltd

Tel: **+44 (0)1896 850473**

Email: **info@ScotWeave.com**

Web: **www.ScotWeave.com**